

Green Street Practice

Patient Participation Group

Green Street Clinic, 118-122 Green Street, Eastbourne BN21 1RT

September 2019

First of all apologies for the delay in providing an update to the news on the new Medical Centre – the position overall is positive but the lease has yet to be signed, which would signify movement forward and the ability to attach dates to the development. We will of course communicate that happy event as and when it occurs

Green Street Practice Opening Hours

Monday - Friday
8.30am - 12.30pm
1pm - 6pm



Telephone access to our Reception Team is available continuously from 8.30am to 6.30pm.

Extended opening hours on Wednesday mornings from 7.30 am and 1 night per week until 8 pm either Tuesday or Wednesday on rotation

Don't miss your chance for a flu vaccination



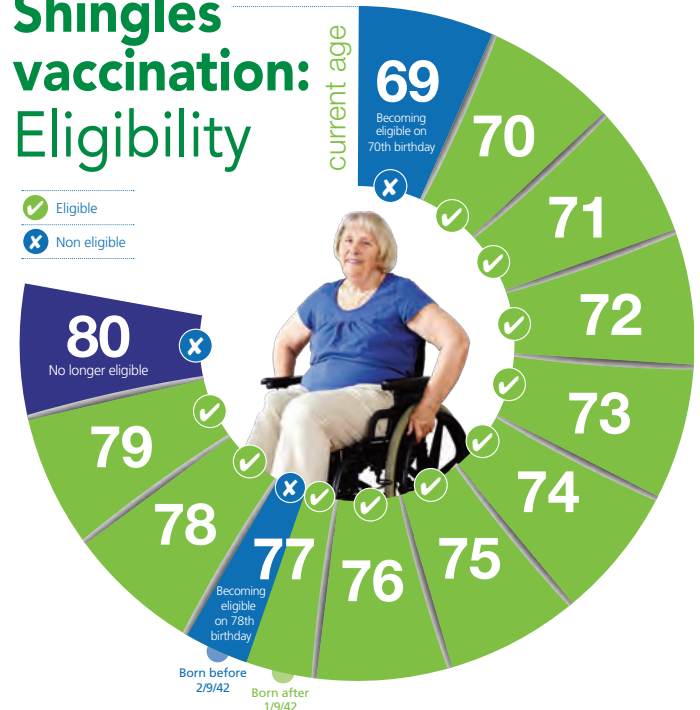
- Patients over 65
- Pregnant women
- Patients with low immunity
- Carers (in receipt of a Carers Allowance)
- Patients with Heart Disease
- Patients with Respiratory Disease
- Patients with Diabetes or Kidney Disease
- Patients in long-term residential care
- Children aged two or three on 31st August 2019

We are sorry, but vaccinations are not available on the NHS unless you are in one of these groups.

The dates for the Flu Clinics have been set as the following Saturdays:

28th Sept • 5th Oct
19th Oct • 2nd Nov

Shingles vaccination: Eligibility



Patients remain eligible for the shingles vaccination up until their 80th birthday.

Vaccination reminders...

- Remember to call Reception on (01323) 736664 to book your vaccination appointment.
- Please arrive at the allotted time
- Please wear appropriate clothing to allow easy access to the upper arm.



Changes that may affect you...

Need to see a GP or nurse in the evening or at the weekend?

Appointments are now available - ask our reception team for more details.


- + Same day and next day appointments
- + Evening and weekend appointments
- + You may be seen at a different surgery and not by your own GP
- + Full access to your GP medical records

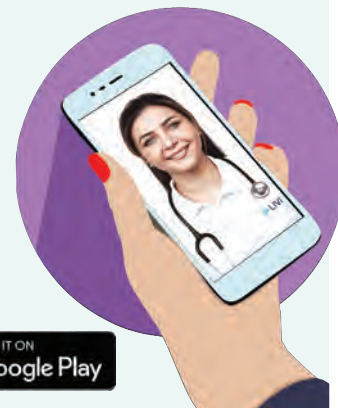
It only takes a moment. When you need a GP.

Free on the NHS to patients of this GP practice.

 **LIVI**
See a GP by video

Available on the  App Store

GET IT ON  Google Play



Paramedic In-House



Our Paramedic Practitioner, Tam, (left) has been with the practice since 2016.

Tam has recently embarked on a Master's Degree and has just completed her Prescribing qualification to

extend her scope of practice within the surgery. She works closely with the GPs undertaking acute visits to free up the GPs time. Tam can feedback any medical concern to the patient's own GP who can then follow up as required.

If you request a Home Visit you may be called by Tam first to assess the priority of your request. Please help us to manage home visits more efficiently by coming to the surgery if you possibly can.

Pharmacist In-House

Pharmacists are now operating in-house, supporting the GPs in carrying out internal medical reviews on:

- Prescriptions contained in Hospital letters
- Medication currently prescribed for existing patients and dosage
- In House medical reviews
- Advice to GPs where an alternative may be required.

In the coming months they will be starting to carry out face-to-face reviews, with patients being called to attend an appointment with the Pharmacist - at this stage you will not be able to request an appointment.

Do you want to save time and money for your NHS?

What is Electronic Prescription Service (EPS)?

The EPS is a free and easy secure service, which sends your prescription electronically from your doctor's surgery to your chosen pharmacy.

EPS is replacing the need for most paper prescriptions, working towards a paper free NHS.



What are the benefits for you and your NHS of using EPS?

Save your NHS millions of pounds each year.



Free and easy, saving you time.



Reliable, secure and confidential.



Save the environment - go paper free.



How to sign up

Act now, sign up by speaking to your pharmacist or your GP surgery - it's that easy.

